



SPONSORSHIP THAT CHANGES LIVES FOREVER



THE HOPE PROJECT

Bridge the Gap Child Mental Health C.I.C.





“
Hope can be an
opportunity for us
to process events
that seem
insurmountable.
”





CHANGING LIVES FOREVER, TOGETHER

We have saved and improved the lives of over 1000 children in Derby City over the last 3 years through evidence based, relationship focused, emotional literacy support. We help children to build authentic resilience and self esteem and now **your** business can be a part of delivering hope to children when they feel like the world is against them.

Not only will our Hope Package generate positive publicity and demonstrate commitment to corporate social responsibility, you will also be changing lives of children and increasing social mobility in the city.



THE HOPE PROJECT



OUR MISSION

We want **all** children to know that they matter, they are loved and they are not alone. Ultimately we want to **save lives** by advocating for, and delivering, relationship focused, emotional literacy based early interventions to make early mental health support **accessible**.



VISION

For the city to come together to combat the child mental health crisis. Raising hope and reducing the number of children self harming and child deaths by suicide.

ACTION

Deliver a combination of community preventative projects alongside reactive, long-term, 1:1 support.

VALUES

Kind, authentic, adaptable and actionable support.





ABOUT US

Bridge the Gap Child Mental Health C.I.C. are on a mission to ensure that every child knows that they matter, they are loved and they are not alone.

We receive no government funding so your sponsorship helps us to maintain and deliver this much needed support to children.

We have three different HOPE packages available meaning that there is something for every business and budget.

Options include:

- Discounts on staff wellbeing workshops.
- Access to online courses that empower the parents in your team to know how to support emotional development and improve the mental health of their child; reducing staff absences as a result of a child being off school.
- Discounts on bespoke webinars based on your teams needs.



WHAT SPONSORS SAY

"The guys at 'Bridge the Gap Child Mental Health C.I.C' are fully committed to supporting the children, parents and teachers in the city of Derby and in the wider area. Through work with all of these stakeholders, their drive and determination to improve mental health is incredibly impressive. Working both proactively and reactively, the team's support is wide ranging; whether it be quality training for schools, work on emotional literacy with children and families or delivering sessions for individuals or small groups.

When I heard about the important work that 'Bridge The Gap' are doing in the local and wider community, I knew that I wanted to donate, both financially and personally. I truly believe in the power of the work that they are delivering and feel it is vital that services such as these are supported; empowering young people especially to develop a greater understanding of their mental health and become more emotionally literate as they take their places in society. The work being done within 'Bridge The Gap' is invaluable.

I would recommend, to anyone who can, to go and see the impact that 'Bridge The Gap' can have on children, young people and families' lives. I applaud their commitment and resilience, and urge people to support the growth of this service."

Ben Wheeler
Director
X-Press Legal Services





PROMOTING YOUR BUSINESS

MARKETING DERBY BONDHOLDERS

We attend regular networking events throughout the year and this gives us many opportunities to talk about you and your business.

The logo for 'MD Marketing Derby' consists of the letters 'MD' in a large, bold, pink font, with the words 'Marketing Derby' stacked below in a bold, black, sans-serif font.

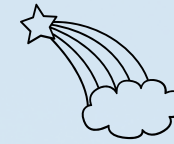
SOCIAL MEDIA AND WEBSITE

We run active social media accounts across all platforms as well as an active YouTube channel. We can use these platforms to promote our sponsors to our engaged audience.

We have over 180 children attend our hub in Derby each week, we can promote your business in our welcome area, this is a unique opportunity for many different adults to find out more about your business.



THE HEP PROJECT



Benefit We will...

CSR

- Provide you with a thank you letter so you can evidence your CSR.
- Provide you with an email footer for you to use in emails and letters.
- Provide you with a window sticker to show that you are helping to change lives forever, together.



Marketing and Promotion

- Add your logo and a link to your website on our website.
- Mention you on our Twitter, Facebook, Instagram and Linked in channels.
- Have hard copies of your businesses leaflets/cards in our welcome area.
- Talk about your business as a sponsor at networking events, sharing your cards for you when appropriate.
- Have a therapeutic room named after your business for 12 months.

1st tier of prominence

2nd tier of prominence

3rd tier of prominence

Monthly

Bi-Monthly

Quarterly



Staff Mental Health

- Discount on staff wellbeing workshops and bespoke webinars.
- Code for free access to our online course for parents.

25%

15%

5%



CHOOSE THE RIGHT PLAN FOR YOUR BUSINESS

We have accessible packages for all businesses so that we can show the children of Derby city how much we care for and believe in them.

Changing lives together, forever.



Hope and Dreams

Annually £5000
Quarterly £1250

See the benefits for you as a business on the previous page.



Hope and Rainbows

Annually £2500
Quarterly £625
Monthly £208

See the benefits for you as a business on the previous page.



Hope

Annually £600
Monthly £50

See the benefits for you as a business on the previous page.



Parents and their children attended a 4-week creative based, emotional literacy course to explore:

- Anger and self esteem
- Bereavement
- Anxiety, behaviour and self esteem
- Anxiety, anger and self esteem
- Introduction to emotions.



100%

of children improved their ability to use coping strategies to help manage difficult emotions.

“ Without you I wouldn't be here, how can I possibly find words to say thank you for that? ”





www.jwbridgethegap.com



jenniferwyman@jwbridgethegap.com



01332 600827

INTERESTED?

If you are ready to commit or would just like more information then please do not hesitate to get in touch with Jennifer to arrange a visit or a chat.

